

Comfort E AL-Foil Mat

System description

Electrical radiant heating AL-Foil roll out mats under removable floorings like parquet, laminate or carpet, 140 W/m²

- Double core cable with AL-Foil; 0,5 m wide with 3 m cold connector and AL-tapes
- Heating conductor with FEP electrical isolation
- Incl. 20 mm protection tube for the floor sensor
- IPX7 - CE marked

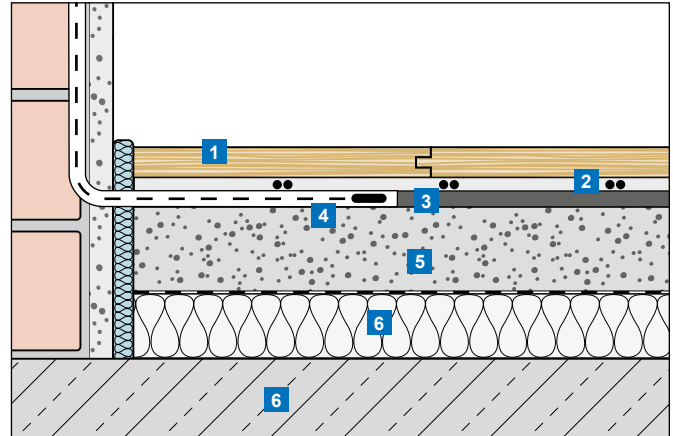
to use for Renovation & new build dry floor construction e.g. living rooms

Technical specifications

Uponor Comfort E AL-FOIL MAT	
Nominal voltage	230 V, AC
Rated capacity	140 W/m ²
Circuit breaker ¹⁾ with C-Characteristics	Max. 16 A
Min. bending radius	30 mm
Min. installation distance	60 mm
Max. operating temperature	+90 °C
Min. installation temperature	+5 °C
Conductor cross section of the connection cable	3 x 0,75 mm ²
Length of the connection cable	3,0 m
Approvals	CE marked

¹⁾ When several heating mats are connected to a fuse box, the total connection current of the mats is limited to max. 16 A.

Floor construction (Example)



- 1 Flooring (e.g. parquet, laminate)
- 2 Uponor Comfort E AL-foil mats (ca. 2 mm)
- 3 Uponor Comfort E AL-foil insulation board (5 mm)
- 4 Floor sensor in protective tube
- 5 Existing screed
- 6 Insulation layer with PE foil covering
- 7 Load-bearing substrate (e.g. concrete)

Heating mat type	Laying area (m ²)	Heating mat length (m)	Heating mat capacity (W)	Heating mat resistance ¹⁾ (Ω)
UPONOR COMFORT E AL-FOIL MAT 140-1	1	2	140	378
UPONOR COMFORT E AL-FOIL MAT 140-2	2	4	280	189
UPONOR COMFORT E AL-FOIL MAT 140-3	3	6	420	126
UPONOR COMFORT E AL-FOIL MAT 140-4	4	8	560	94
UPONOR COMFORT E AL-FOIL MAT 140-5	5	10	700	76
UPONOR COMFORT E AL-FOIL MAT 140-6	6	12	840	63
UPONOR COMFORT E AL-FOIL MAT 140-7	7	14	980	54
UPONOR COMFORT E AL-FOIL MAT 140-8	8	16	1120	47
UPONOR COMFORT E AL-FOIL MAT 140-9	9	18	1260	42
UPONOR COMFORT E AL-FOIL MAT 140-10	10	20	1400	38

¹⁾ Tolerance -5% to +10%

